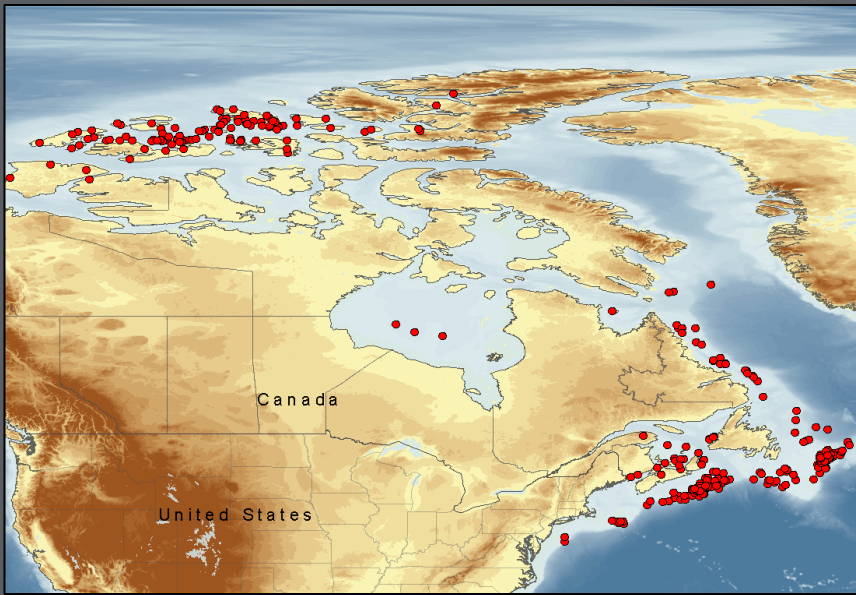


In order to fully evaluate exploration potential and risk in any area, an understanding of the petroleum systems geochemistry is essential. Compiling data into a consistent format, to allow this evaluation is a time-consuming task. In IGI's East Coast Canada Database this work has been done and additional well data including location and stratigraphy have been assembled and integrated where possible.

The East Coast Canada database comprises data for 57,809 samples from 390 offshore wells. This includes over 256 fluids, 12,000 headspace gas samples and 57,009 rock analyses. TOC content is reported for 49,031 samples with most of these also having additional pyrolysis data. Gas chromatography data are widely available for more than 1,600 samples and maturity data, in the form of vitrinite reflectance values, are present for 6,499 samples.



The data originate from the online NRCAN (Natural Resources Canada) Basin Database. Geochemical data are publically available in the form of individual Excel tables. These are split by well, analysis and (in some instances) sample. IGI has systematically catalogued these data and compiled them into p:IGI-3, the industry standard application for petroleum geochemical databasing and interpretation. With over 30 years experience of assembling and interpreting large geochemical datasets for the petroleum industry, our database products can be used with high confidence by geologists, geochemists and basin modellers.

The East Coast Canada Geochemical Database is provided with a Well Manager file containing available lithostratigraphy and basic well information for all 390 wells. This allows the user to seamlessly add samples from proprietary or in-house sources to the database, and assign uniform stratigraphy, map coordinates and other well information. The dynamic database automatically updates all plots on sample addition to minimise reaction time between data acquisition and interpretation.

Data mining and extraction

- * Catalogue available geochemical data
- * Compile and assimilate data
- * Load data into separate p:IGI-3 files
- * Merge into single database (p:IGI-3)

Quality Assurance

- * Normalise data from different laboratories
- * Unit conversion
- * Identification of outliers
- * Assess data density and distribution

Well Data Import

- * Unify & assign stratigraphy
- * Geo-reference data
- * Assign sample metadata

Database cost (p:IGI format)

List Price:	£45,000
Existing p:IGI clients:	£36,000

For further details please contact:
info@igilt.com

