

P:IGI-3 VERSION 3.4 – RELEASE NOTES

This is a descriptive list of the changes incorporated into the March 2011 p:IGI-3 release (Version 3.4) relative to the added to the March 2010 release (i.e. changes from version 3.300 to 3.400).

The latest release uses an updated installation process that will enable future updates to be provided as interim patches between major release dates.

This document covers the following topics:

- Important Changes
- Feature Enhancements
- Dialog Enhancements
- De-duplication Changes
- Bug Fixes
- Distribution File Changes
- p:IGI WellManager (current version 1.18 – bug fix)
- p:IGI PCA (current version 1.04 – no changes)
- List of Changed Files and Installation Paths

CONTENTS

p:IGI-3 Version 3.4 – Release Notes.....	1
Important Changes.....	3
Unit Conversion change for Peaks Unit µg/mg	3
File Format Changes	3
Autograph Updates	3
World Data Update.....	4
World Maps Changes.....	4
Feature Enhancements.....	5
Chungplot.....	5
Decimal Precision Change for Axes	5
Merging Linked Columns.....	5
Pair Plotting Control on XY Graphs	5
Histogram Colour Palette Order	6
Column Dialog Access	6
Creating SampleSets from Error Range Checking.....	6

Copying SampleSets.....	7
Triplot Axes/Grid Lines Colouration	7
Barchart Graph Settings – Axes.....	7
Decimal Places in Palettes	7
Update Default Colour Dialog	8
Default Cell Position when Opening Page.....	8
Minimum AND MAXIMUM Symbol size	8
Scrolling and Visibility in SampleSet List.....	8
Column Header Settings Dialog	9
Joining SampleSets Auto-name Option	9
Auto-scaling Axes.....	9
Optional Acknowledgements of Message Dialogs	10
Custom Page Deletion Confirmation Dialog.....	10
Save As Version 3.300 Feature.....	10
Dialog Enhancements	10
Import From ASCII File Dialog	10
Statistics Dialog	12
Create/Edit Colour or Symbol Palette Dialog.....	12
Key Columns Configuration Dialog.....	13
Create/Edit Spreadsheet Dialog – column selection.....	13
Merge Data Dialog	15
De-duplication Changes affecting merging	16
Automatically Create SampleSet on Merge Results.....	16
Ignore A SampleSet When Merging.....	16
Bug Fixes	17
Unexpected Blank Space in Graphs	17
Inappropriate Effect of Forward-Delete in Spreadsheet.....	17
Loading p:IGI File Crash.....	17
Cell Readout Area Updated on Opening Page	17
Deactivated Some WellManager Import Controls.....	17
Key Columns Settings.....	17
All Formulae Data Removed From Export	17
Updating Graph Title in Tree View	18
Equation Processing	18
Distribution File Changes	18
Updated ‘Default – Unit Groups.txt’	18
Updated Autographs List.....	18
Updated ‘Default – Columns.txt’	19

Updated Default Graph Templates	19
p:IGI WellManager	19
Data Persistancy for New Data Fields	19
p:IGI PCA	19
List of Changed Files and Installation Paths.....	20

IMPORTANT CHANGES

UNIT CONVERSION CHANGE FOR PEAKS UNIT $\mu\text{G}/\text{MG}$

A correction has been made to the units occasionally used for peak-derived data (i.e. unit group 30) which in the past, included an incorrect conversion factors for $\mu\text{g}/\text{mg}$. Release 3.4 now uses a conversion factor of x0.001 (from ppm or ng/mg unit) instead of x1000. The correction will be applied to all new project files and any existing project files that have not used this unit option for saving or importing data.

It is important to note that existing projects that have imported data or saved data using this unit option will need to have any affected data values manually corrected (to remove the previous erroneous conversion factor) so that the new conversion factor can be applied correctly.

FILE FORMAT CHANGES

The following new features will add additional information storage to the p:IGI project file and to any associated templates:

- The 'Reverse Legend Stacking' option - Although this is currently only applicable for the Histogram, the change to the Layout information affects all the graph types, p:IGI file project and all graph template formats.
- The 'Use only paired data values' option affects the p:IGI file project and XY graph template format.
- The 'Always Confirm Autolinks' option affects the Import template format.

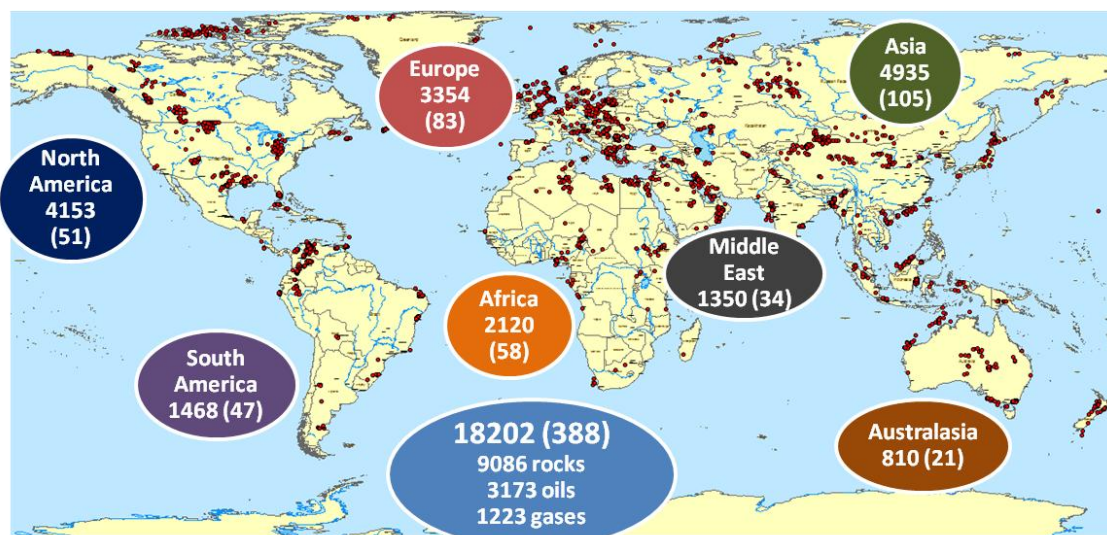
AUTOGRAPH UPDATES

The Autograph files have been updated. The main change is the introduction of folder 7 that is now called “7 – Gas” and brings together existing and some new autographs (e.g. Chung Plots) relating to gas interpretation. In addition, there are some minor changes to a small number of autographs in folders 1 to 6.

Please refer to the autograph documentation “p:IGI 3_4 Autograph Images.pdf” and “p:IGI 3_4 Autograph List.pdf” or check the new content from the Autograph viewer in p:IGI-3.

WORLD DATA UPDATE

The following information documents a continuing effort by IGI Ltd to create a World Database for p:IGI based on published data. This p:IGI release contains an extensively updated world dataset which constitutes some 18,202 samples from 388 publications. IGI Ltd has attempted to select publications and quality control the data entered but responsibility for the data remains with the authors (see attached), and responsibility for use of, and conclusions drawn from, the data remain with the individual users and their companies. If in doubt, refer to the original publication for details.



The map above shows the spatial density of the p:IGI World Data compilation. Figures shown refer to the number of samples for each region, with the number of publications shown in parentheses. Of its nature, a database composed of published information forms a sparse matrix due both to the tendency to only report part of the available data in the published tables, and that samples may only be analysed for specific properties.

The World Data file is typically found in // <InstallDir>/IGI Ltd/p:IGI3.4/Resources/WorldData/

WORLD MAPS CHANGES

The maps used for geospatial visualisation and analysis in p:IGI have undergone a complete overhaul for the release of p:IGI-3.4. All maps have been created in ArcMap 9.2 using the WGS84 GCS (geographic coordinate system) and exported to the **<WorldMap>** subfolder of the p:IGI **<Resources>** directory. Some of the historical World Map files, that have since been superseded, have been removed. For users who may wish to continue using the old maps, these have been made available on the [p:IGI forum \(www.igilt.com/forum\)](http://www.igilt.com/forum).

FEATURE ENHANCEMENTS

CHUNG PLOT

The Chung plot graphs the stable carbon isotope ratios for methane, ethane, propane and butane against the reciprocal of the carbon number ($1/n$ where n is the number of carbon atoms in the molecule). A Chungplot graph option has now been added with mostly pre-defined settings and has been implemented as a specific version of a Barchart graph type with inappropriate options greyed out. The Chung plot graph can be accessed from the Autograph pull-down menu (under '7 - Gas') or from the 'Autograph Preview' button under "7-gas", or can be created by right-clicking the Barchart folder in the graph tree view and selecting "Create new graph - Chungplot...". Two forms of Chung Plot (with and without overlay) are offered on the Autographs menu. The Chungplot can also be created from the main menu using Graph/Create new 2D/Barchart Types/Chungplot.

There is now a read-only text label, "Created as Chungplot", on the Axes page of the Barchart graph settings dialog that indicates whether a Barchart graph was created as a Chungplot or as a standard Barchart (greyed text label).

DECIMAL PRECISION CHANGE FOR AXES

In addition to setting the decimal precision of axes on X-Y plots from the Graph Settings/Axes XY/D.P. drop-down menu, checking the 'Auto DP from Min Max' box will reverse the process (i.e. set D.P. to the precision used for the manually set limits).

MERGING LINKED COLUMNS

Merging two p:IGI-3 files can be achieved using the 'File/Merge Data/Project Merging Options' dialog window. An 'Include Linked Columns' check box has been added under the 'Data to Merge' section of the Project Merging Options dialog. This allows the user to select whether the linked columns will be included as part of the data merge. This is useful for numeric data where although source and target cell data match, they may have differing decimal precision (DP) and so the user can choose to prioritise linked data to increase or reduce numeric precision. For textual data this should have no effect as source and target text data match exactly. The default for 'Include Linked Columns' is unchecked, i.e. do not include linked columns, and has the effect of adding only new samples to the current project.

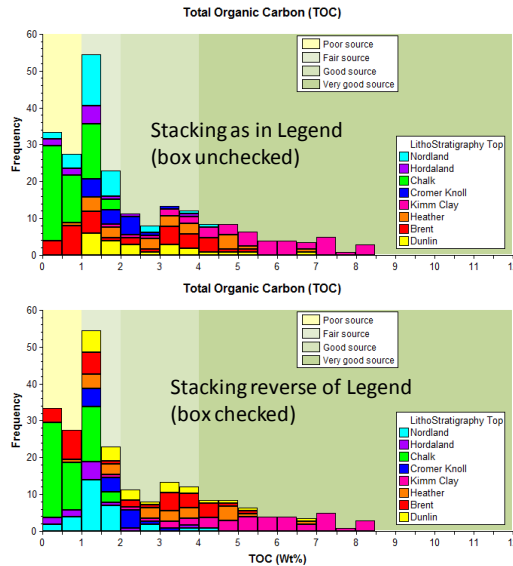
PAIR PLOTTING CONTROL ON XY GRAPHS

At present the autoscaling options of p:IGI-3 graph axes deal with the x-axis and y-axis independently. This can be unhelpful with datasets containing y-values with no matching x-values or vice versa. Since only pairs of x- and y-values will show as a symbol on an x-y plot, it follows scaling of axes can usefully be restricted to 'data pairs'. A 'Use only paired data values' check box has been added to the Axes page of the Graph Settings dialog for the XY graph type. This option enables the user to check the box to consider only data that has both an X and a Y component. This affects ranges determined during 'Derive from Data', 'Auto set all from data' and autoscaling for the XY graph type.

The Map Settings dialog is also linked into the new functionality for a comparison check for XY value pairs when plotting on an XY graph so that the setting of the 'Use only paired data values' will be effective for the XY minigraphs.

HISTOGRAM COLOUR PALETTE ORDER

At present histogram colour legend shows in reverse order to the graph. A checkbox control has been added to the Layout tab of the Graph Settings dialog in a new area called 'Block Display Ordering'. The new check-box is termed 'Reverse Legend Stacking'. This option is active for Histograms but hidden for all other graph types. The default, displays (stacks) blocks in the same order as the colour key legend. The control will now allow this to be reversed. For downward compatibility, graphs will revert to the historic 'reversed stacking' order.



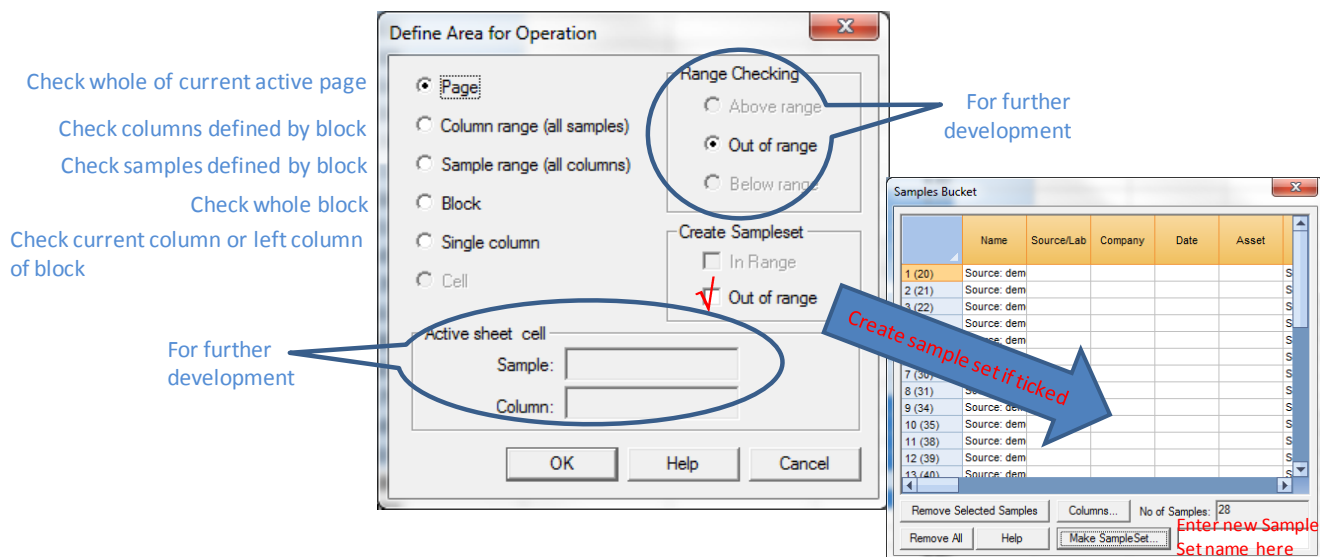
COLUMN DIALOG ACCESS

The column header row can now be used to access the Column dialogs. Holding down the Alt key and (left) clicking the column header cell will bring up the appropriate Column Header Settings dialog for normal data columns and the Key Columns Configuration dialog for key columns. As well as Alt-click, double-clicking the top-left cell will still launch the Key Columns Configuration dialog but launching this dialog from any row header has been removed.

CREATING SAMPLESETS FROM ERROR RANGE CHECKING

Out of range values (typical or absolute) can be checked automatically and identified by colour highlight using the "Page/Colour values outside typical/maximum range/" pull-down menu option. This option checks the entered data values against pre-set but editable ranges for typical or absolute values. These ranges are set in each column header (Page/Columns (data)/Column Header Settings menu or Alt-click on column header).

The new release (Version 3.4) allows the check to be focussed on a page, a block, or a column based on the current cursor position (page or column) or highlighted area (block). If a block of samples + columns is defined in the page, there is a choice of applying the error check to samples alone or columns alone. If a block is defined in the page and the 'Single Column' choice selected, then the range check is applied to the left column only. The option to create a SampleSet of samples with out-of-range values has been added, and directs the user to the Samples Bucket for review before saving under a user-created sample set name. Further functionality is planned for this dialog/feature.



COPYING SAMPLESETS

Sample sets are found in the 'Sample Set' tab of the project workspace tree, typically docked on the right side of the p:IGI-3 workspace. There is now a context (right click) menu option to be able to create a new SampleSet as a copy of an existing SampleSet, using menu option 'Create Copy'. The new name takes the existing name and appends a numeric value in parenthesis, e.g. (2).

TRIPLLOT AXES/GRID LINES COLOURATION

It is now possible to toggle the colour of the ternary axes/grid lines between black/grey (normal/default) and coloured (fixed red, green and blue). This control is found as a check box at the bottom of the Graph Settings/Axes-triplot tab.

BARChart GRAPH SETTINGS – AXES

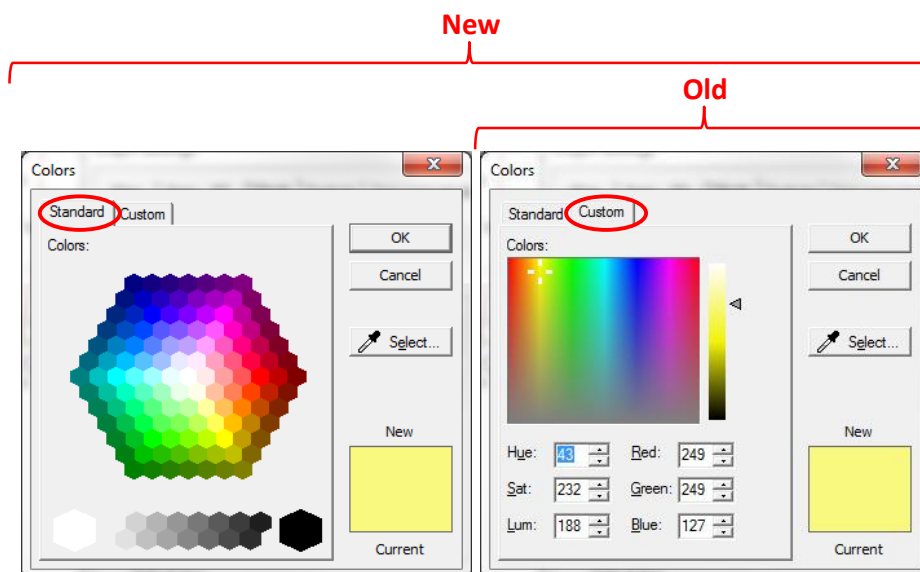
A check box option has been added to the Bar Chart in order to append (or not append) units to data titles. The control is located on the axes tab of the Barchart graph settings dialog. To add or remove units select a data source (column), check the 'Append units to tile' box and re-assert the Data button. You will be asked to confirm the column with 'OK' to change the unit status. The default is units appended to titles.

DECIMAL PLACES IN PALETTES

When creating numerically-based symbol and colour palettes for graphs, the previous decimal precision was from 1 to 6 decimal places. There is now an option to set the number of decimal place displayed in palette keys from 0 to 6.

UPDATE DEFAULT COLOUR DIALOG

The standard Office 2007 colour definition dialog is now used by p:IGI-3.4. The newer version includes a honeycomb selection panel similar to the form used in Office 2007 applications.



DEFAULT CELL POSITION WHEN OPENING PAGE

When opening a Data Page, the selected cell position will be the top-left data cell and not the key column cell, this allowing immediate access to full functionality of the column option.

MINIMUM AND MAXIMUM SYMBOL SIZE

The graph symbol size range (in font 'point' units) has been extended to be a minimum of 4 (used to be 8 point) up to a maximum of 32 (used to be 30 point). The increments of 2 points is retained.

SCROLLING AND VISIBILITY IN SAMPLESET LIST

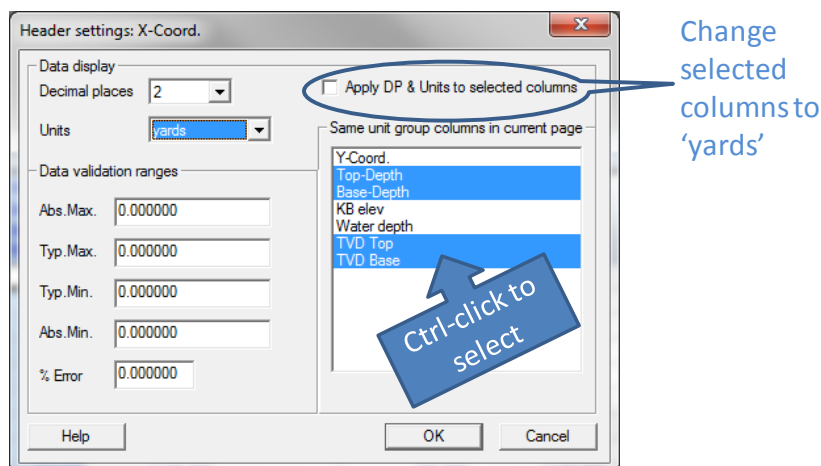
Scrolling functionality has been added to the Sample set workspace tree controls to enhance the ability to drag and drop SampleSets and folders in the list.

The scrolling works when dragging a list item with the left mouse button held down and moving the dragged object to the top or bottom of the tree control. The scrolling has 4 speeds as the object moves further away from the tree control.


The position of the items in the SampleSets list now stay in its last position when dragging and dropping a SampleSet or folder item, rather than 'jumping' the current item to the bottom of the visible list.

COLUMN HEADER SETTINGS DIALOG

It can be useful to change units (e.g. feet to metres) in a group of related numeric columns. As part of a new layout for the Column Header Settings dialog, the 'Same unit group columns in current page' list has been made multi-select. So now the functionality of the 'Apply DP & Units to selected columns' check-box will cause the same unit changes to be applied to all the selected columns.



JOINING SAMPLESETS AUTO-NAME OPTION

When joining two sample set queries into one  the new name for the joint sample set had to be entered manually. An Auto-name button has been added which populates the new SampleSet name box with a concatenation of the two selected SampleSet names. The input names are joined by the selected logical operation, i.e. OVER (overlap or intersection), ADD (addition or sum) or SUB (subtract or difference).

AUTO-SCALING AXES

Auto-scaling functionality will now be active when zooming using a drag area for the following graph types:

- All axes on the XY, Triplot, Multidepth and Histogram.
- The frequency (y) axis only on the Barchart.

This functionality is currently not available for the Starplot or the XYZ graph types.

The axes will now auto-scale when zooming using the methods a) toolbar buttons; b) Graph -> Zoom -> In/Out menu options; and c) + / - via keyboard; for the following graph types:

- XY, Triplot, Histogram, Starplot, Barchart, Multidepth and XYZ.
- Note A: To return to the initial values use the 'Restore Zoom Home' button.
- Note B: The Multidepth zooming functionality retains the existing behaviour and zooms on the y-axis only.

The axes will now auto-scale when using the 'Autoset all from data' controls on the Graph Settings dialog for the following graph types:

- XY, Triplot, Starplot, Multidepth and XYZ.

This functionality is currently not available for the Histogram or Barchart graph types.

The axes will now auto-scale when using the 'Derive from Min & Max' controls on the Graph Settings dialog for the following graph types:

- XY, Histogram, Starplot and XYZ.

This functionality is currently not available for the Barchart, Triplot or Multidepth graph types.

The axes will now auto-scale when using the 'Derive from Data' controls on the Graph Settings dialog for the following graph types:

- XY, Histogram, Starplot and XYZ.

This functionality is currently not available for the Barchart, XYZ or Multidepth graph types.

OPTIONAL ACKNOWLEDGEMENTS OF MESSAGE DIALOGS

Functionality has been added that makes it possible to use a Message Box with a timeout option, e.g. Message Box call for "New custom page created successfully!" on creation of a new custom page. A call to the new Message Box Timeout function was added with a timeout of 2 seconds so that the message clears automatically if the user doesn't click OK within this time. The user can still click the OK button to acknowledge the message as normal.

CUSTOM PAGE DELETION CONFIRMATION DIALOG

A confirmation Message Box is now shown for deletion of a custom page to ensure that the user definitely wants to delete the selected custom page. The message box displays the custom page name in the title and the user selects the Yes button to confirm deletion, otherwise selection of the No button cancels the delete request.

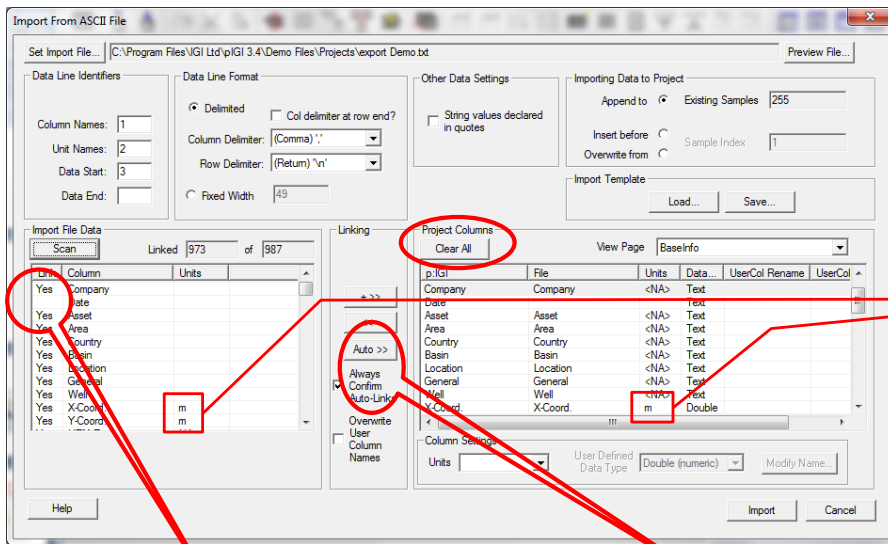
SAVE AS VERSION 3.300 FEATURE

An option has been added to the File drop down menu 'Save Project As Version' called '3.300' that allows the user to save the current p:IGI project in a specific (previous) p:IGI project file format. This will continue to be updated for future versions as the p:IGI project format changes.

DIALOG ENHANCEMENTS

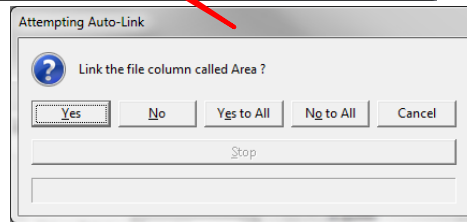
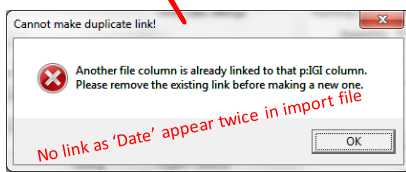
IMPORT FROM ASCII FILE DIALOG

Revised layout plus a number of enhancements have been applied to the Import Dialog functionality to improve the user control over importing data. The File/Import Data/From text file (ASCII) option adds an Imported file to the currently loaded Project file. A major issue is the linking of the import data to the appropriate p:IGI-3 column in the appropriate units.



Note revised layout

Now detects unit (exact ASCII match) of import file, searches p:IGI-3 unit options for match, and corrects imported value to current p:IGI-3 unit for column.



Added functionality includes:

Linking headers now also links on units (ASCII text string exact match). If the imported unit term matches any entry in the unit group of the target p:IGI column, then the p:IGI column units will be adjusted automatically to that of the import file. On import, the data will appear in the column units of the already loaded Project File. If the Import dialog cannot match the units of the imported file to any of the p:IGI-3 unit options (or no units are specified), then the data values are imported in p:IGI-3 base units as previously was the case.

Now there is an 'Always Confirm Auto-links' check box that will be used in combination with a Message Box with 'Yes', 'No', 'Yes To All' and 'No To All' options that will allow the user to control the overwriting process.

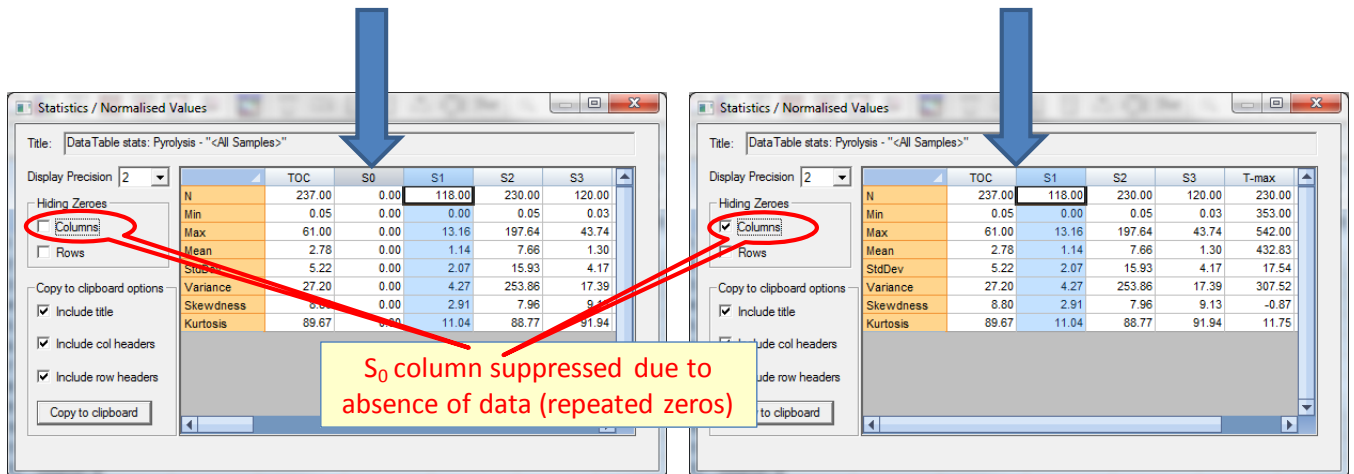
Link checking is undertaken, any existing links will be advised via the Message Box and the user can confirm whether to overwrite existing links or not, using the 'Yes' and 'No' buttons. If the 'Always Confirm Auto-links' is selected, attempting auto-links that do not have any existing links detected still ask the user for confirmation.

A button control has been added for 'Clear All' Links so that any existing links are fully cleared in one step.

The default unit for any project columns that use Unit Group 2 (Count), will be set to the 'per mil' option. This is applicable to importing functionality only.

STATISTICS DIALOG

The statistics dialog output can produce a large matrix of results, sometimes with many matrix elements set to zero due to lack of data. The new 'Hiding Zeroes' control on the "Statistics/Normalised Values" output dialog allows the user to hide either columns or rows that have all data content equal to zero. This is common functionality to the Statistics output dialog for page and some graph statistics. In addition, the Multidepth graph uses subplots so the added functionality also handles this case to allow for row formatting of groups of data sets.



The following improvements were made to the Statistics Dialog:

- Modified the Statistics output dialog to give 2 decimal places as the default precision
- Modified the Statistics output dialog table to make the n-column (number of measurements contributing to the statistic) an integer.
- Modified the Statistics output dialog derived from either colour or symbol breakdown, then the relative palette title is appended to the stats title. This applies to the Barchart, Histogram, Multidepth, Starplot, Triplot and XY graph types.

CREATE/EDIT COLOUR OR SYMBOL PALETTE DIALOG

Any highlighted item in the colour or symbol item list (of the Create/Edit Colour or Symbol Palette Dialog page) can now be deleted with the Remove button.

A newly added item is now immediately highlighted automatically and the 'Selected Item / Data' area is also updated to reflect the current item selection. Now also, the top item is highlighted on initial opening of the dialog. These changes apply when using either the Colours page or the Symbols page.

The Remove Button now automatically highlights the next remaining item in the list

KEY COLUMNS CONFIGURATION DIALOG

The key column list now defaults to one item selected. On opening the Key Configuration dialog the top column item is the default selection.

When using the 'Selected column' arrow buttons to move the column item up or down the list, the current selection will remain constant to indicate the item that is being moved.

When using the 'Add column' button, the added column item becomes the current selection. In addition, if the added column already exists in the list then the existing column item will become the current selection.

The Key Columns Configuration dialog has been changed so that after a 'Remove' column label operation, the current selection position in the column list will either be retained or set to the end of the list where there are no columns labels below.

CREATE/EDIT SPREADSHEET DIALOG – MAIN PAGE

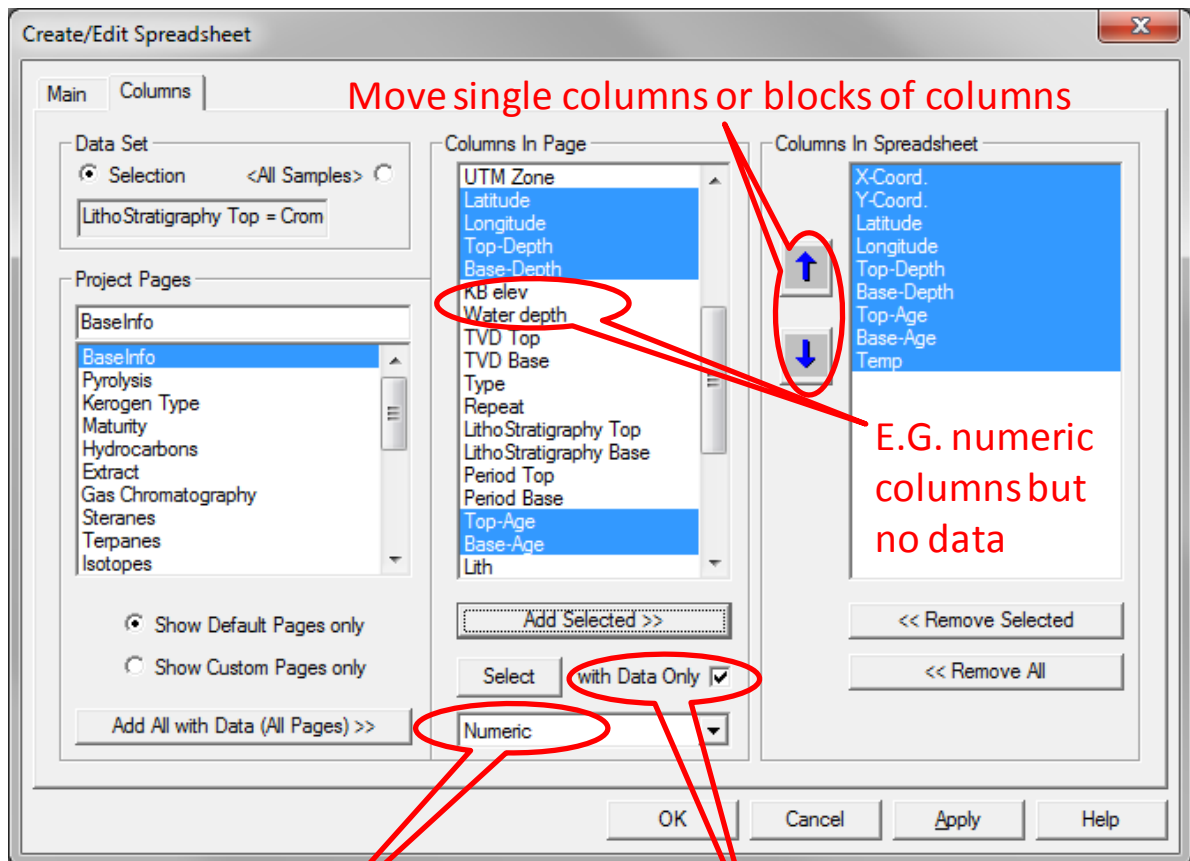
Default (pre-defined) Pages have restricted edit option when using the Main page of the Create/Edit Spreadsheet dialog.

The column page on the Create/Edit Spreadsheet dialog is now unavailable for default pages.

CREATE/EDIT SPREADSHEET DIALOG – COLUMN SELECTION

The Create/Edit Spreadsheet dialog has been enhanced to aid Custom Page creation as follows:

- Added a drop-down list, on the Columns page, to choose a data criteria for selection of columns. This identifies columns based on the options 'All', 'Text', 'Numeric' and 'Equation'.
- Added a check box to select only columns that contain data (used in combination with the data criteria drop-down).
- Incorporated 'Select' button that carries out the appropriate selection of 'Columns in Page' based on the current data drop-down and check-box settings (above).
- When adding columns the new additions are now automatically selected.
- A 'Remove All' button has been added and is operable on the selected columns list, to complement the 'Add All' button.
- It is now possible to make multiple selections of Columns so the Shift key can be used for block selection between two items and the Ctrl key for addition of individual items to a selected group.



1. Select only numeric columns

2. Select only columns with data

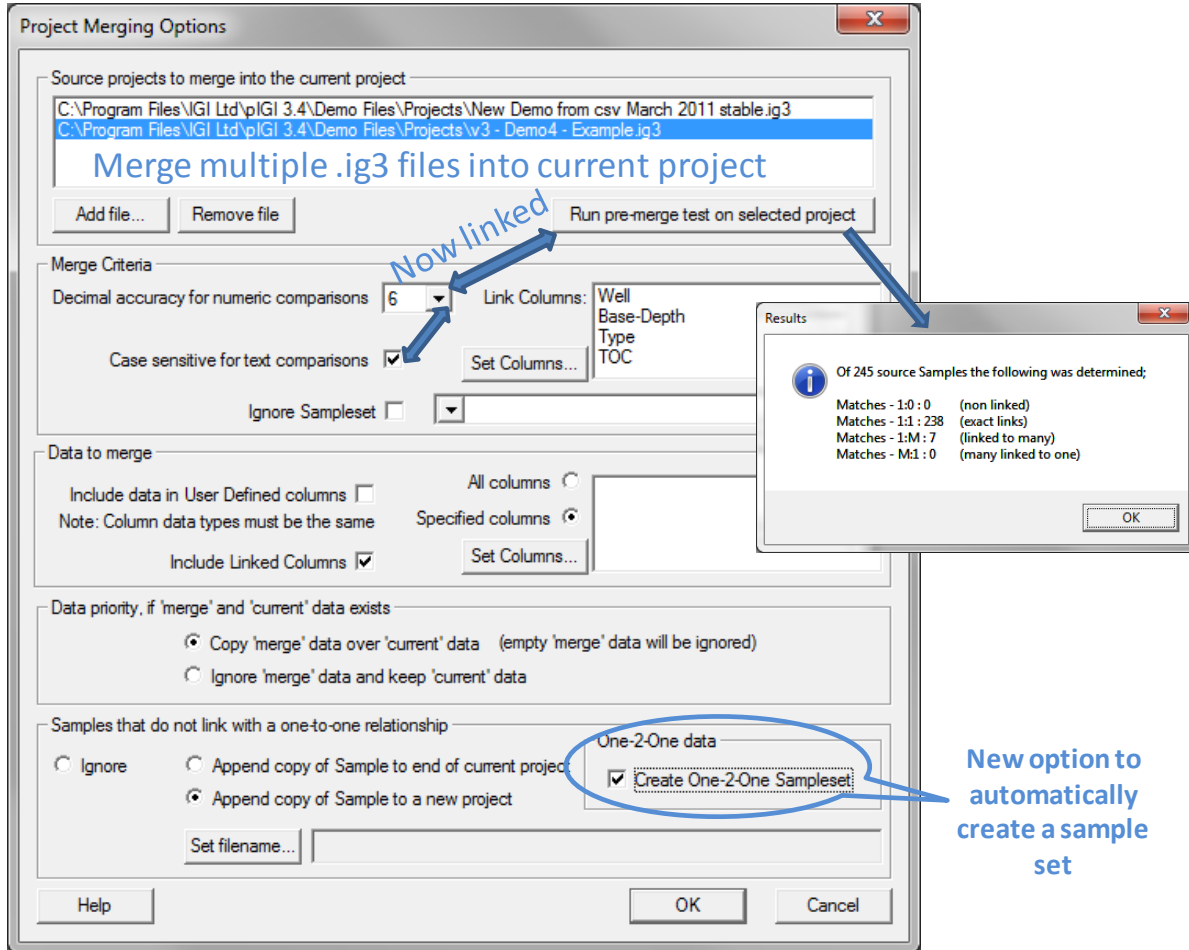
Up and down arrows may be used to move the relative positions of columns (as per the colour/symbol dialogs).

A selected group of columns can now be moved up and down using the movement control buttons. The behaviour is as follows:

- A continuous selection group can be moved up one place at a time using the up arrow button until the top of the list is reached.
- A continuous selection group can be moved down one place at a time using the down arrow button until the bottom of the list is reached.
- A non-continuous selection group will be 'compressed' first, i.e. will be made continuous.
 - If moving up then the selections will be grouped continuously below the top-most selection and then moved up. If the top most item in the list is one of the selected non-continuous group then 'compression' will still take place and the selected group will appear at the top of the list.
 - If moving down then the selections will be grouped continuously above the bottom-most selection and then moved down. If the bottom most item in the list is one of the selected non-continuous group then 'compression' will still take place and the selected group will appear at the bottom of the list.

MERGE DATA DIALOG

The Merge option of p:IGI-3 allows data from two or more p:IGI-3 files to be merged subject to user-defined criteria for matching samples (e.g. well name, depth, and sample type). Redesign of the layout controls aims to aid smoother operability through the settings and also incorporates some new merge options.



In the new release (Version 3.4), both the 'Decimal accuracy for numeric comparisons' and 'Case sensitive for text comparisons' are used when selecting the 'Run pre-merge test on selected project' button.

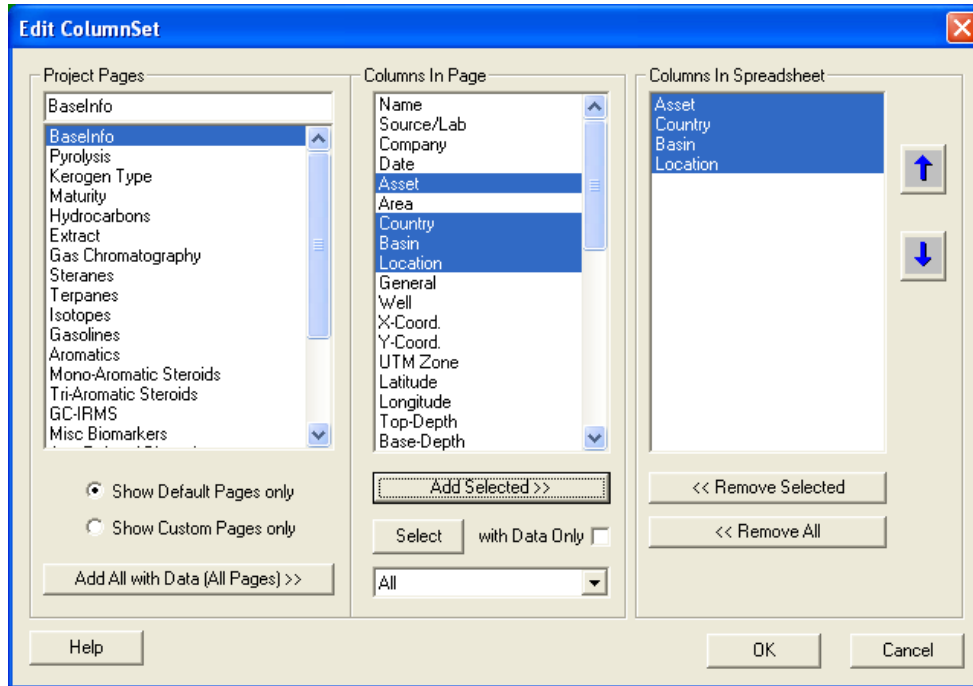
Multiple files (e.g. one .ig3 file containing Rock-Eval, one .ig3 file with Extract and one .ig3 file with Biomarker data, but all from the same well), may be merged on common criteria. The adding and deletion of files has been simplified.

In the new release (Version 3.4), when samples do not link one-to-one on the stated criteria, they may be appended to the current file or saved to another file. The 'Set filename...' button and associated filename text box are now only enabled (usable) for selection if the 'Append...to new project' option is selected.

Updated functionality for the Merge Data dialog operations when selecting column sets.

EDIT COLUMN SET DIALOG FOR MERGING

Used up and down arrow bitmaps for the move column buttons (as per the colour/symbol dialogs) and repositioned at the side to give relational positioning.



A 'Remove All' button has been added and is operable on the selected columns list, to complement the 'Add All' button.

It is now possible to make multiple selections of Columns so the Shift key can be used for block selection between two items and the Ctrl key for addition of individual items to a selected group.

A selected group of columns can be moved up and down using the movement control buttons.

DE-DUPLICATION CHANGES AFFECTING MERGING

Merging two database files can give rise to the duplication of data, duplicate samples being one sample where some (and occasionally all) of the data is repeated a number of times (i.e. a number of rows on p:IGI-3 pages). The following two steps, when used together, help in an iterative merging cycle. The functionality is incorporated into the Merge Data dialog.

AUTOMATICALLY CREATE SAMPLESET ON MERGE RESULTS

Functionality has been added to allow the user, via a new dialog check-box, to 'collect' the one-to-one merged samples in the sample bucket. This allows isolation and inspection of the most rigorously merged results.

IGNORE A SAMPLESET WHEN MERGING

It is now possible to ignore a selected SampleSet in the current Project File when merging, this allowing the merge criteria to be applied to only part of the currently loaded Project File.

BUG FIXES

UNEXPECTED BLANK SPACE IN GRAPHS

A fix has been implemented to resolve the incorrect key space allowance when unused colour or symbol items are hidden. When using or changing the 'Hide Unused Items' option for either colours or symbols, the graph should be redrawn to allow correct spacing for the current size of the key. This has been correct for all affected graph types.

Also a minor positional change was made to the 'Hide Unused Items?' option on the dialog and removed the '?' from the text.

INAPPROPRIATE EFFECT OF FORWARD-DELETE IN SPREADSHEET

The use of the Del key to edit the contents of cells within any page has been updated to conform with standard spreadsheet practice.

LOADING P:IGI FILE CRASH

There was a problem loading static query sets with more than 200 associated samples. This is now resolved.

CELL READOUT AREA UPDATED ON OPENING PAGE

The column information will now be displayed in the read-out area when opening a page and the selected cell position is positioned at the top-left most data cell.

DEACTIVATED SOME WELLMANAGER IMPORT CONTROLS

The 'Import Other' check box and all the associated options on the 'Import From WellManager File' dialog, i.e. Sequence, Seismic and Chrono have been de-activated until on-going development allows targeting of correct columns.

KEY COLUMNS SETTINGS

If no columns are assigned as key columns then the key column information was incorrectly saved to the project file so when re-opening it, the key column settings were not read in correctly.

A fix has been introduced, so to implement the change, open the file using at least p:IGI 3.4, set the key columns accordingly and save the file. The newly saved file will now use the new correct saving format.

ALL FORMULAE DATA REMOVED FROM EXPORT

Now, when using the 'Export Data' dialog, selecting 'All Columns' will exclude the export of data associated with the All Formulae Page.

In addition, the All Formulae page has been removed from all inappropriate Page drop-down lists.

UPDATING GRAPH TITLE IN TREE VIEW

The Workspace Graph Tree is now automatically updated when changes, e.g. rename title, are made to a graph via the Graph Settings dialog. This applies to all graph types.

EQUATION PROCESSING

When writing column equations for the User Defined pages, you can now simply apply a function to a column id reference, e.g. LN(<311>). This fix is also applicable to any user created formulae/equations, though the existing workaround (e.g. LN(1*<311>)) still gives the correct result.

DISTRIBUTION FILE CHANGES

UPDATED 'DEFAULT - UNIT GROUPS.TXT'

A correction has been made to the ug/mg unit option used for peak-derived data. This now uses a conversion factor of x0.001 (from ppm or ng/mg unit) instead of x1000. This change has been made in the 'Default - UnitGroups.txt' file. We apologise for this error!

UPDATED AUTOGRAPHS LIST

The process of updating the list of Autographs has been continued. The Autograph folder structure now consists of the following:

- 1 - Kerogen Type
- 2 - Maturity
- 3 - Generation
- 4 - Migration
- 5 - Alteration
- 6 - Correlation
- 7 - Gas
- 8 - User Graphs

A new folder '7 - Gas' has been added that brings together new and improved gas-related graph templates, including templates for the new ChungPlot graph. The previous set of graph templates that were contained in the old folder '7 - Graph Archive' have been superseded, but are still available on the p:IGI-3 forum (www.igiltd.com/forum/)

The contents of the Autograph folders are covered in separate documentation called 'pIGI-3 Autograph List.pdf' and 'pIGI-3 Autograph Images.pdf', which can be found in the installed '/_Documentation' folder.

The Autographs will continue to be updated during 2011. Backing up of any user defined Autographs, or graph templates, is highly recommended. Contact us if you have any new ideas or requirements in this direction.

UPDATED 'DEFAULT – COLUMNS.TXT'

The following changes were made to the 'Default – Columns.txt' file:

- Changed the formula for Column 638 (Tt31 (S/R)205) to be <636>/<637> [used to be <630>/<631>].
- Changed the title for Column 593 to be b-carotane125 [used to be b-carotane123].
- The hint text for column 616 (24_28BNH177 on the Misc Biomarkers page) now reads "24,28-bisnorhopane isomer from m/z 177" [changed from "24,28-bisnorlupane isomer from m/z 177"].

UPDATED DEFAULT GRAPH TEMPLATES

All the 'Default.xxx' graph template files have been updated to reflect the latest project file format.

In addition, a new file called 'Default Chungplot.bct' has been added to provide default settings for new Chungplot graphs.

P:IGI WELLMANAGER

The latest p:IGI WellManager version is 1.18. There has been one bug-fix.

DATA PERSISTANCY FOR NEW DATA FIELDS

When typing or pasting data into the Area and Location fields for one Sample Set (e.g. Well A), the data appear to be erased when another Sample Set is selected (e.g. Well B) i.e. when the user goes back to Well A the Area and Location fields are blank.

A modification was applied for well fields associated with the new details; i.e. Source/Lab, Asset, Area, Location and General, so that manual entry of text is remembered when switching between well details.

P:IGI PCA

The latest p:IGI PCA version is 1.0.4.0. No changes.

LIST OF CHANGED FILES AND INSTALLATION PATHS

The updated installation files for the latest version of p:IGI are listed below. These are automatically available if the re-installation process is used to update p:IGI or the relevant files can be replaced manually using the installation path information.

Note: <InstallDir> refers to the root folder selected for installation. The p:IGI installation folder is typically:

"C:\Program Files\IGI Ltd\pIGI_3" (32-bit platform) or

"C:\Program Files (x86)\IGI Ltd\pIGI_3" (64-bit platform).

The updated executable files are:

<InstallDir>\pIGI_3.exe (version 3.4)

<InstallDir>\pIGI_WellManager.exe (version 1.18)

The updated distribution files are:

<InstallDir>\Resource\Default – Columns.txt

<InstallDir>\Resource\Default – Unit Groups.txt

<InstallDir>\Resource\Autographs\Gas\ <New Folder for gas-related graph templates>

<InstallDir>\Resource\Defaults_Original\ <Modified ALL FILES>

<InstallDir>\Resource\Defaults_User\ < Modified ALL FILES>